



PAISAJISMO  
FUERA  
DE LO COMÚN



singulargreen.com  
info@singulargreen.com  
+34 673 768 624

# Singular Green

Nature-based solutions





Vegetal Awnings Valladolid, 2020

# 01

## INTEGRATING NATURE VS "GREENING"

### How to Stand Out by Integrating Nature

Integrating Nature into Architecture goes beyond simply "greening" a project. True integration means incorporating natural systems that create ecosystems and maximise all the benefits they offer us.

### How We Help You

At SingularGreen, we specialise in naturalising spaces reliably and sustainably by:

- Creating tailor-made solutions.
- Providing our own systems.
- Offering guidance and expertise throughout the entire process.

We advise, design, and execute extraordinary landscaping projects based on the latest technologies and innovations.

We integrate architecture and vegetation to transform cities and enhance the quality of life for their inhabitants.

**SingularGreen: Creative Solutions Based on Nature.**



20

Renaturalised Cities

6

European Research  
Projects

15

Proprietary Systems

3

Patents



Green Roof, Parque Baladre, Gandia, 2018



Sound Barriers, Valladolid, 2021





**10.000 m<sup>2</sup>**

Living walls

**30.000 m<sup>2</sup>**

Green roofs

**1.325 m<sup>2</sup>**

Natural pools

**300**

Completed projects



# 02

## OUR EXPERIENCE







# The largest vertical garden in Spain 1,500 m<sup>2</sup>

Vertical garden, Palace of Congresses of Vitoria, 2014



Eco Tech Green Award 2018.





Figure 1 is a detailed architectural section of a building facade, illustrating the integration of various plant species. The facade is divided into two main sections by a central entrance. The left section features a dense wall of greenery, while the right section shows a more structured arrangement of plants. Numerous plant species are labeled with their names and small images of the plants. The labels include: Cissampelos, Ficus sp., Oenothera, Aeschynomene, Echinacea, Salvia, and others. The diagram illustrates the integration of diverse plant life into the building's design.

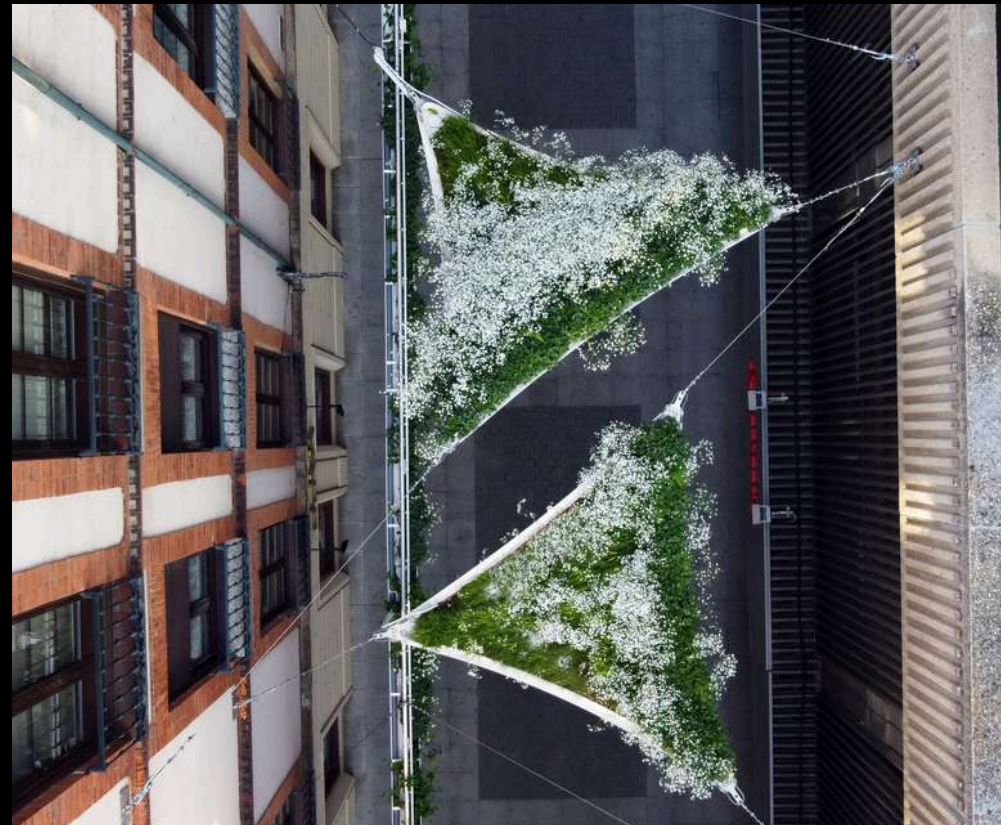
6



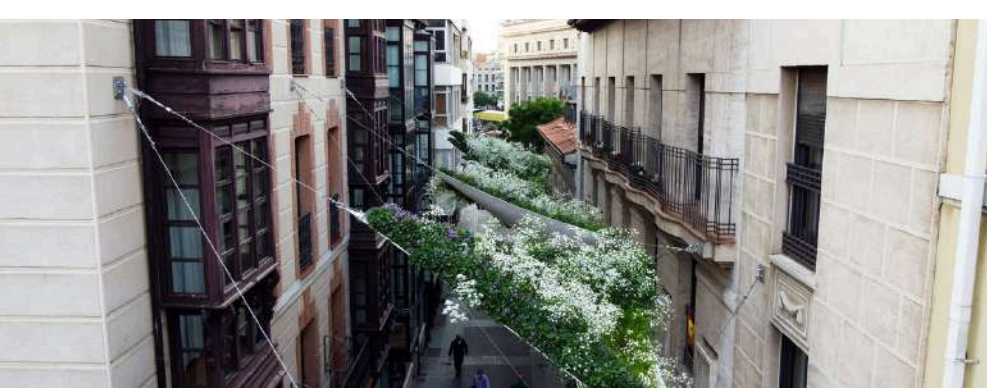
# The world's first green awning system



Green awnings, Valladolid, 2020







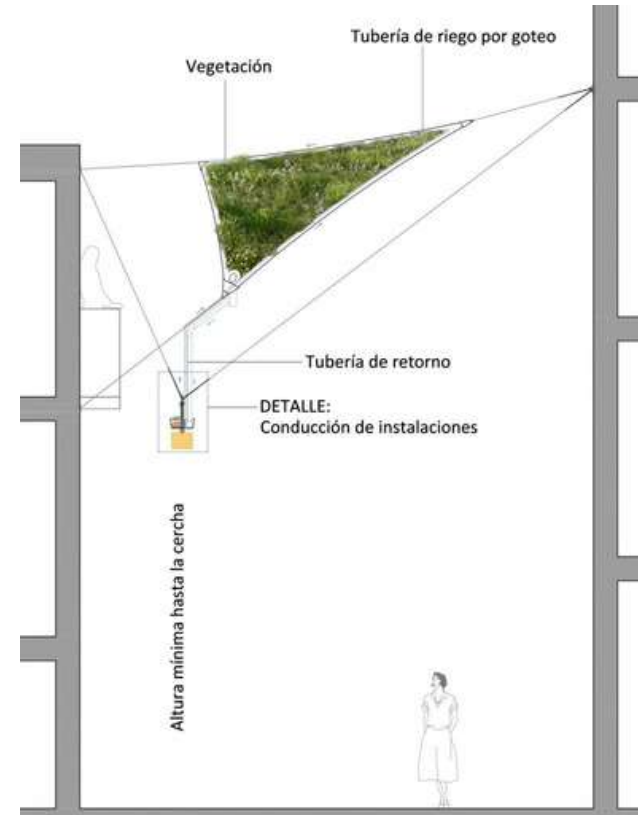
## Green Shades, Valladolid

**Location:** Calle Santa María, Valladolid

**Vegetation surface:** 200 m<sup>2</sup>

**System used:** Leafskin (seed spraying)

This solution aims to revitalise certain streets in the city centre, boosting commercial activity in the area and enhancing the quality of life in its surroundings.



The main benefit of this project is that it helps mitigate the urban heat island effect in city centres by reducing temperature through the shade they provide and the evapotranspiration of the plants..





The world's lightest  
green roof

Green roof, market canopy, Valladolid, 2020







Green roof, market canopy, Valladolid, 2020



## Urban GreenUP, Valladolid

**Location:** Metal canopies of Plaza de España, Valladolid

**Vegetation surface:** 488 m<sup>2</sup>

**System used:** Rizoma

**Species:** Sedum

It is a green roof installed on the canopies, arranged across four independent surfaces. This not only enhances the aesthetics and regenerates the urban space but also helps regulate ambient temperature and improve air quality, making the market a more pleasant environment.

It features a lightweight inert substrate and small, low-water-demand species, which also helps reduce maintenance.

**Ultralight system:** 25 kg/m<sup>2</sup>





## DESIGN AWARDS

Collaboration with architects and/or interior designers to integrate nature into their projects.



Restaurant & Bar Design Awards 2015.  
Nando's restaurant, London





## Unique systems, different results

We specialise in integrating architecture and nature in a unique way, tailored to each project, with a strong ability to create and develop efficient and sustainable systems.



Several projects completed with our EcoBin system for indoor and outdoor use with ceramic planters.





Coliving Suiters, Alicante, 2022



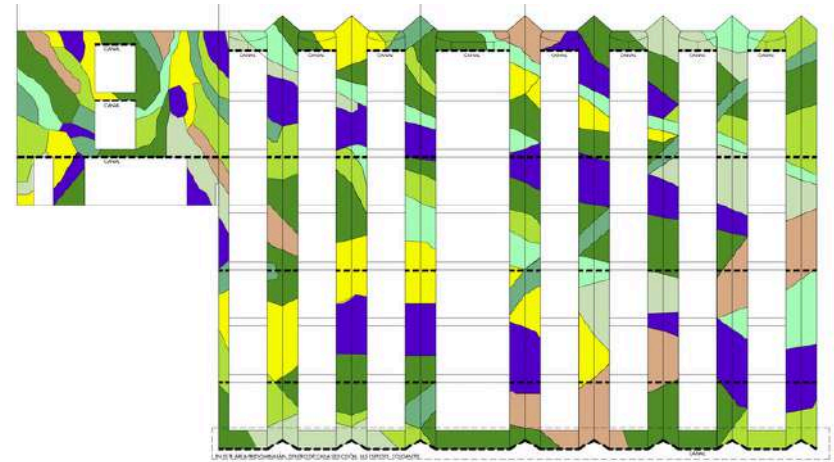
## Suiters Building, Alicante

**Location:** Exterior façade of the Suiters Building, Alicante

**Vegetation surface:** 363 m<sup>2</sup>

**System used:** F+P on the north façade (190.68 m<sup>2</sup>), east façade (129.01 m<sup>2</sup>), and south façade (43.65 m<sup>2</sup>). The building also features climbing plants on the balconies.

**Design:**



*Asparagus sprengeri*    *Carex oshimensis*    *Geranium sanguineum*    *Jasminum mesnyi*    *Lavandula officinalis*



*Lonicera nitida*    *Pistacia lentiscus*    *Smilax aspera*    *Thymus vulgaris*    *Tradescantia pallida*





## Queranto Natural Pool, Mexico

In Queranto, Mexico, we have collaborated with the Goma Haus studio on a groundbreaking project that redefines the experience of enjoying water in a natural and sustainable environment.

This project benefits from the rich biodiversity of birds, dragonflies, snails, and frogs, transforming it into a true oasis within a semi-desert landscape.

The choice of a custom biological filter to purify the bathing water addresses the issue of pollution in Mexico's rivers and lakes, providing a viable and environmentally friendly alternative.







Better air  
**quality**

Increase in  
**biodiversity**

Temperature  
**reduction**

Durable  
**barrier**





## Custom unique elements

It is a green roof installed on the canopies, arranged across four independent surfaces. This not only enhances the aesthetics and regenerates the urban space but also helps regulate the ambient temperature and improve air quality, making the market a more pleasant environment.

It features a lightweight inert substrate and small, low-water-demand species, which also help reduce maintenance.

Virgen Blanca Square, Vitoria-Gasteiz, 2012



Zorrilla Square, Valladolid, 2021



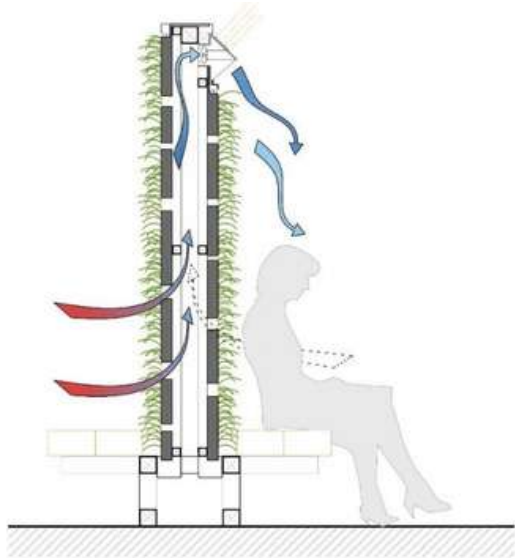


## Urban bio filter, Valladolid

**Location:** The Urban BioFilters are located in two central squares of the city: Zorrilla and Rinconada, Valladolid.

**Vegetation surface:** The plant-covered area measures 3.80 metres in length with a surface area of 6.95 square metres on each side.

**System used:** Urban BioFilter. This system also includes solar-powered fans, which help lower the surrounding temperature during the warmer months.



The project is designed for installation in areas with limited vegetation, where, in addition to enhancing biodiversity and absorbing pollutants, the evapotranspiration capacity of the plants helps reduce the urban heat island effect.





# 03

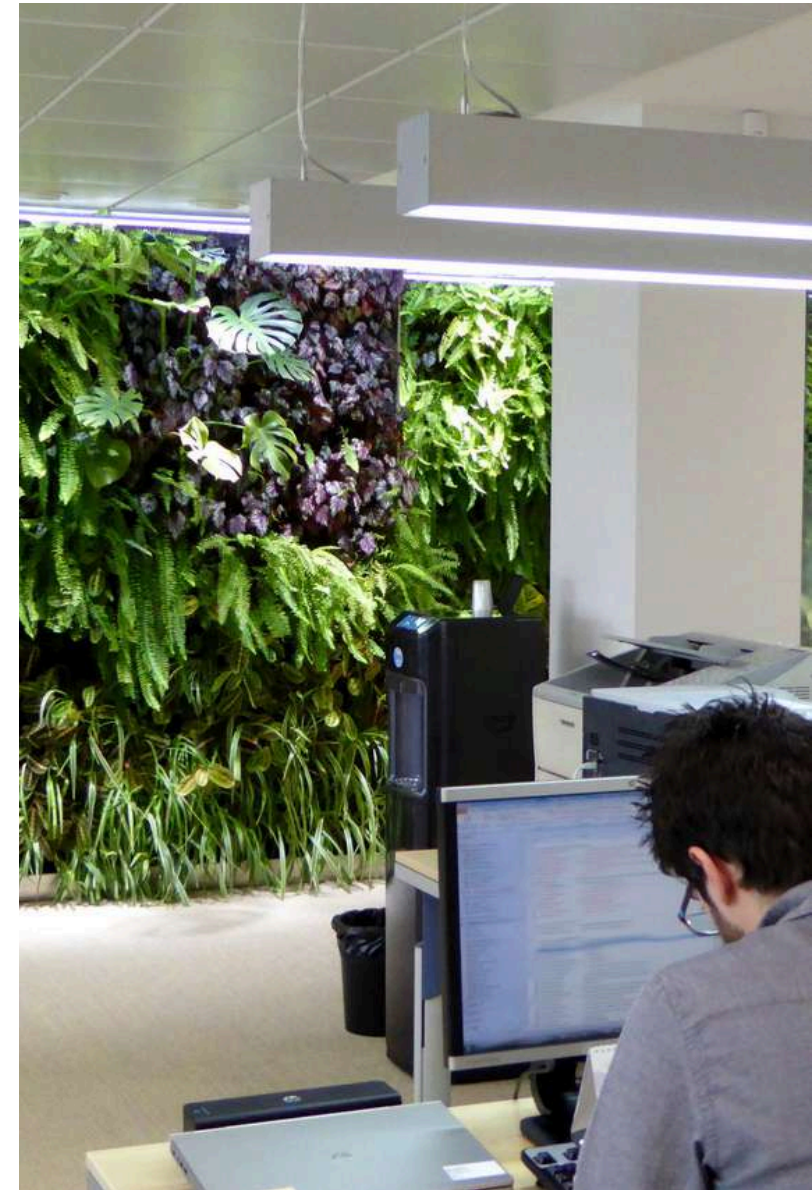
## REVITALISATION OF WORKSPACES

According to a study by psychologist Cary Cooper, professor at the University of Manchester and an expert in workplace well-being and stress:

"Workspaces that incorporate nature provide a calmer environment, making it easier to focus, reducing fatigue, and lowering the need for recovery."

The study states that "People who enter a workplace with natural elements are more likely to feel happy and motivated throughout the day." Additionally, natural light, live plants, water, and both indoor and outdoor green spaces can boost productivity and creativity by up to 15%.

At SingularGreen, we are well aware of this, which is why we not only apply it for our clients but also enjoy it in our own Alicante office.





## Naturalised interiors



Weleda Offices, Madrid, 2017



Paseito Ramiro Offices, Alicante, 2020

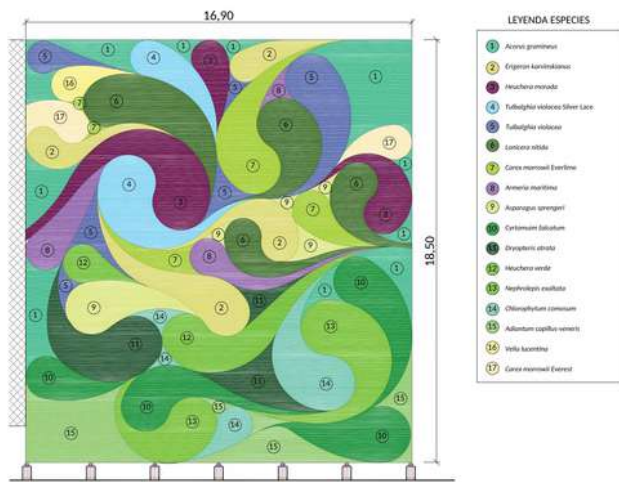


Ferring Offices, Madrid, 2014



SingularGreen Offices, Alicante, 2018



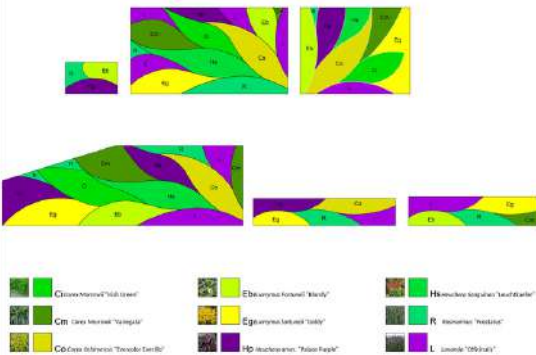


## 04 CUSTOM DESIGNS

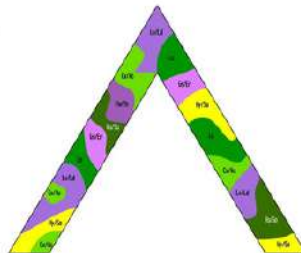
One of our goals is to create unique projects that stand out for their design and landscape integration, both in open spaces and interiors.

Our solutions are designed to address and resolve all types of structural junctions and construction details.

Each project is approached in a unique way.



JARDÍN VERTICAL  
STAT by KRONOS, TARRAGONA





# 05

## WATER OPTIMISATION

One of the most important factors in landscape design is water management.

At SingularGreen, we always seek the most suitable system to reduce irrigation demand in our projects.

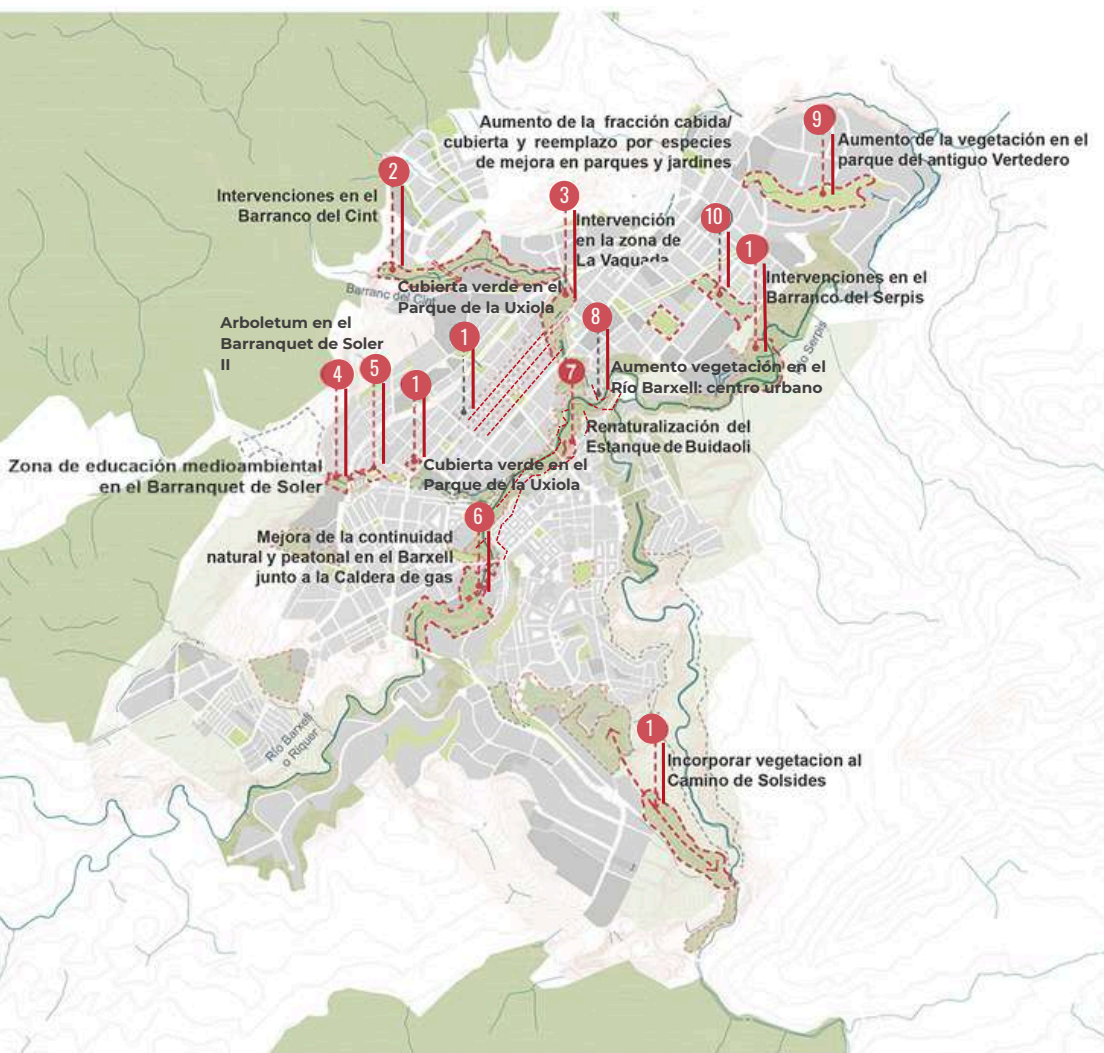


Additionally, we use the latest telecontrol technology to manage maintenance needs quickly and efficiently. That's why we monitor all our projects to ensure they always remain in perfect condition.





## PLANES DE NATURALIZACIÓN URBANA



Fundación Biodiversidad, Alcoy City Council, 2021–2022

One of the key actions within the 2030 Agenda for Sustainable Development is comprehensive urban planning that adapts cities to climate change, which requires their renaturalisation.

At SingularGreen, we have extensive experience in designing and developing urban renaturalisation plans, supporting municipalities throughout the entire process, including assistance with public and European funding applications.

We have participated in and coordinated various European Union projects, such as the LIFE Programme, Urban GreenUP, Misiones Ciencia e Innovación, and Fundación Biodiversidad. All these initiatives aim to develop methodologies for renaturalising urban plans, mitigating climate change effects, improving air quality, enhancing water management, and increasing the sustainability of our cities.



**Public funding  
processing**

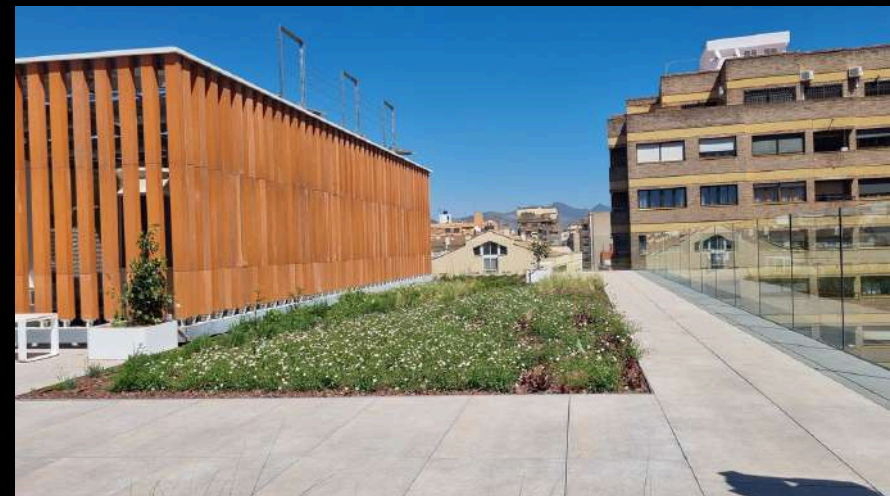
**Comprehensive project  
consultancy and execution**

**Citizen  
participation plans**

**Design and execution of the  
marketing plan**



Ontinyet 2018



Castellón, Alicante, 2023





Canal de Isabel II, Madrid, 2020

# 07

## SINGULARGREEN GUARANTEE MAINTENANCE

The key to the success of projects that integrate nature and architecture lies in maintenance.

At SingularGreen, we provide ongoing support throughout the entire lifespan of the project. Using our telecontrol system, we continuously monitor and detect any maintenance needs to ensure everything remains in perfect condition—whether we handle the maintenance ourselves or an external company is responsible.

Additionally, for projects where we manage maintenance, we offer a 100% plant guarantee.





[singulargreen.com](http://singulargreen.com)

[info@singulargreen.com](mailto:info@singulargreen.com)

+34 966 282 640

+34 673 768 624

