



GREEN  
ROOFS



# 01

## WHAT IS A GREEN ROOF?

Green roof transform roofs into living spaces, allowing the incorporation of greenery in both walkable and non-walkable systems. These systems offer significant benefits:

- **Economic:** Energy savings and long-term cost reduction.
- **Environmental:** Increased biodiversity and improved air quality.
- **Well-being:** Greater thermal and acoustic insulation for a healthier environment.
- 

At SingularGreen, we have developed innovative solutions tailored to any need:

- **From cistern roofs:** High-capacity systems that optimize water use and improve energy efficiency.
- **To ultra-lightweight systems:** Perfect for greening any type of roof, even with weight restrictions.

With our systems, we integrate nature and sustainability into architecture, creating unique and functional spaces.



**Energy  
saving**

**Increased  
thermal and acoustic  
insulation**

**Prolongation of the service  
life of the roof**





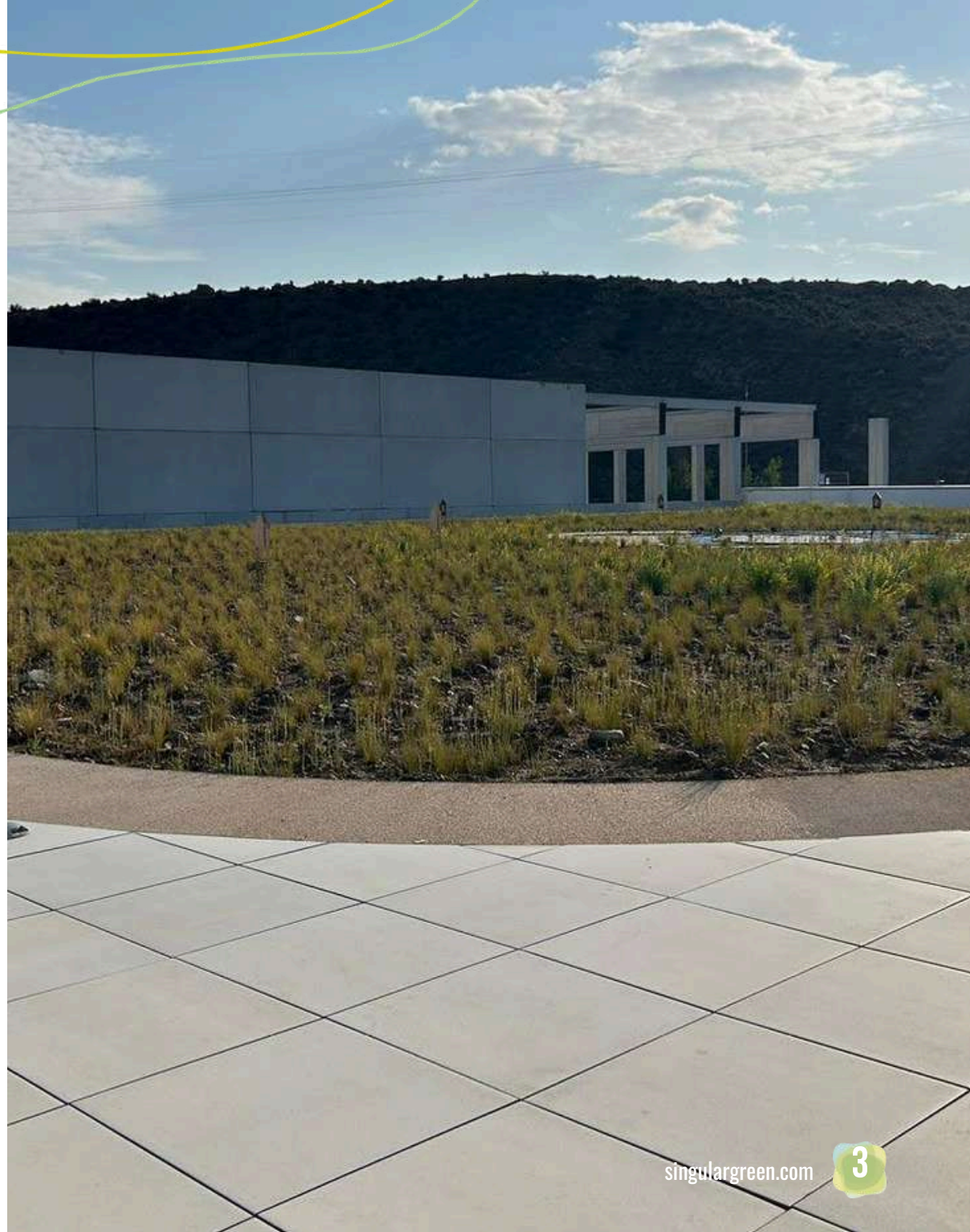
# 02

## FEATURED PROJECTS

At SingularGreen, we combine design, sustainability, and creativity to transform roofs into living spaces.

Our vegetative covers are a clear example of this commitment, providing ecological, landscaping, and economic benefits. Among them, the **Cikla Roof** stands out for its focus on **circular economy**, reusing construction resources to blend naturally with the surrounding environment and landscape.

Additionally, our solutions extend the **lifespan of waterproofing**, enhance thermal insulation, optimize **energy savings**, and deliver sustainable, efficient, and environmentally friendly projects.





**Integral execution**



Alcantarilla, Murcia, 2023





## PARC BALADRE AUDITORIUM, GANDÍA, VALENCIA



**Location:** Gandía, Valencia

**Type of building:** Auditorium.

**Surface area:** 1.500 m<sup>2</sup>

**System used:** Cantir.

**Species:** Grass seeded (*Cynodon dactylon*, *Festuca arundinacea* and *Lolium hybridum*).

**Benefit:** Incorporation of the roof into the city's public space.



## BORRULL PUBLIC BUILDING CASTELLÓN

**Location:** Castellón

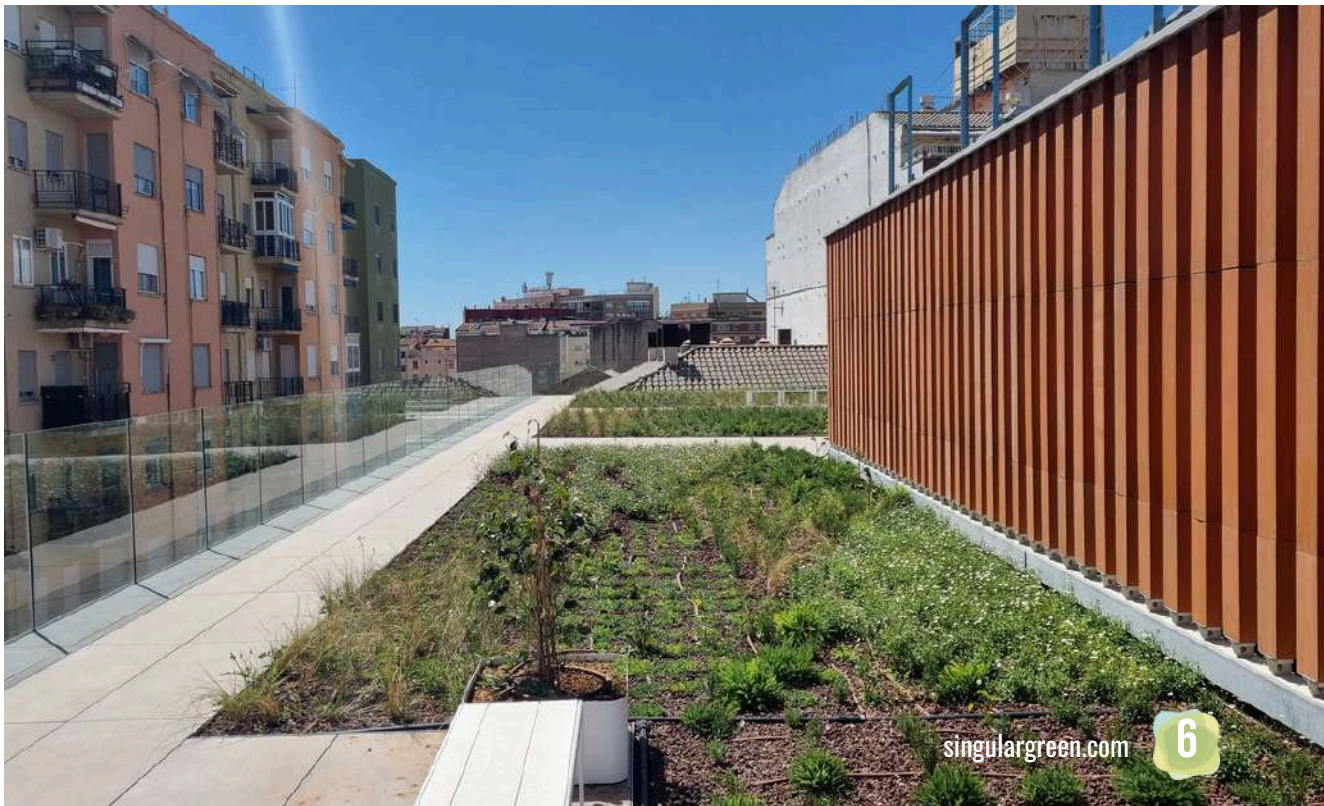
**Building type:** Public building

**Area:** 360 m<sup>2</sup>

**System used:** Rizoma

**Species:** Grasses, perennials, and flowering plants

**Benefit:** Ultra-lightweight system with easy assembly.





## Creative solutions



Valladolid, 2020





## OFFICE, MADRID



**Location:** Madrid.

**Type of building:** Private housing

**Surface area:** 200 m<sup>2</sup> (120 + 80).

**System used:** Rizoma.

**Species:** Sedum species supplied in sods.

**Benefit:** Energy and economic savings thanks to the reduction in the use of air conditioning.



## HOUSE VILAMARXANT, VALENCIA

**Location:** Vilamarxant, Valencia.

**Type of building:** House.

**Surface area:** 30 m

**System used:** Baobab.

**Species:** succulent plants of the genera Aeonium, Crassula, Echeveria, Sedum and Sedeveria.

**Benefit:** High resistance to arid climates without the need for irrigation.





## Custom projects



Arcos de la Frontera, 2018





## PRIVATE HOUSING GRANADA



**Location:** Granada.

**Type of building:** Private housing

**Surface area:** 220 m<sup>2</sup>

**System used:** Rizoma

**Species:** Sedum species supplied in sods.

**Benefit:** Active cooling in housing and elimination of the use of air conditioning.



## Better use of URBAN SPACES



Solana de los Barros, 2022



## VEGETATED CANOPIES VALLADOLID

**Location:** Valladolid.

**Type of building:** Marquees.

**Surface area:** 444 m

**System used:** Leafskin.

**Species:** Sedum species supplied in sods.

**Benefit:** Ultra-light and low maintenance system.





# The world's lightest plant cover in the world



Valladolid fruit market canopy, 2020





# 03

## SINGULARGREEN SYSTEM TYPES

SingularGreen offers innovative and sustainable solutions for vegetative roofs, tailored to different uses and needs. These are divided into:

### Non-walkable roofs

**Rizoma:** A lightweight and efficient roof, available in two variants depending on the weight and substrate thickness:

- **Ultralight** (35 kg/m<sup>2</sup>): Ideal for projects with load restrictions, featuring sedum-type vegetation.
- **Standard** (45-50 kg/m<sup>2</sup>): Accommodates larger plant species thanks to its higher water retention capacity.

### Walkable roofs

**Cántir:** Uses external substrates formulated according to the vegetative finish, ranging from grass to shrubs or vegetable gardens. Flexible and customizable.

**Cikla:** Incorporates circular economy by reusing excavation substrate, adapted to native species to enhance sustainability and minimize the ecological footprint.



Energy  
**SAVING**

Improved  
**THERMAL AND  
ACOUSTIC** insulation

Prolonging the  
**SERVICE LIFE OF  
THE ROOF**

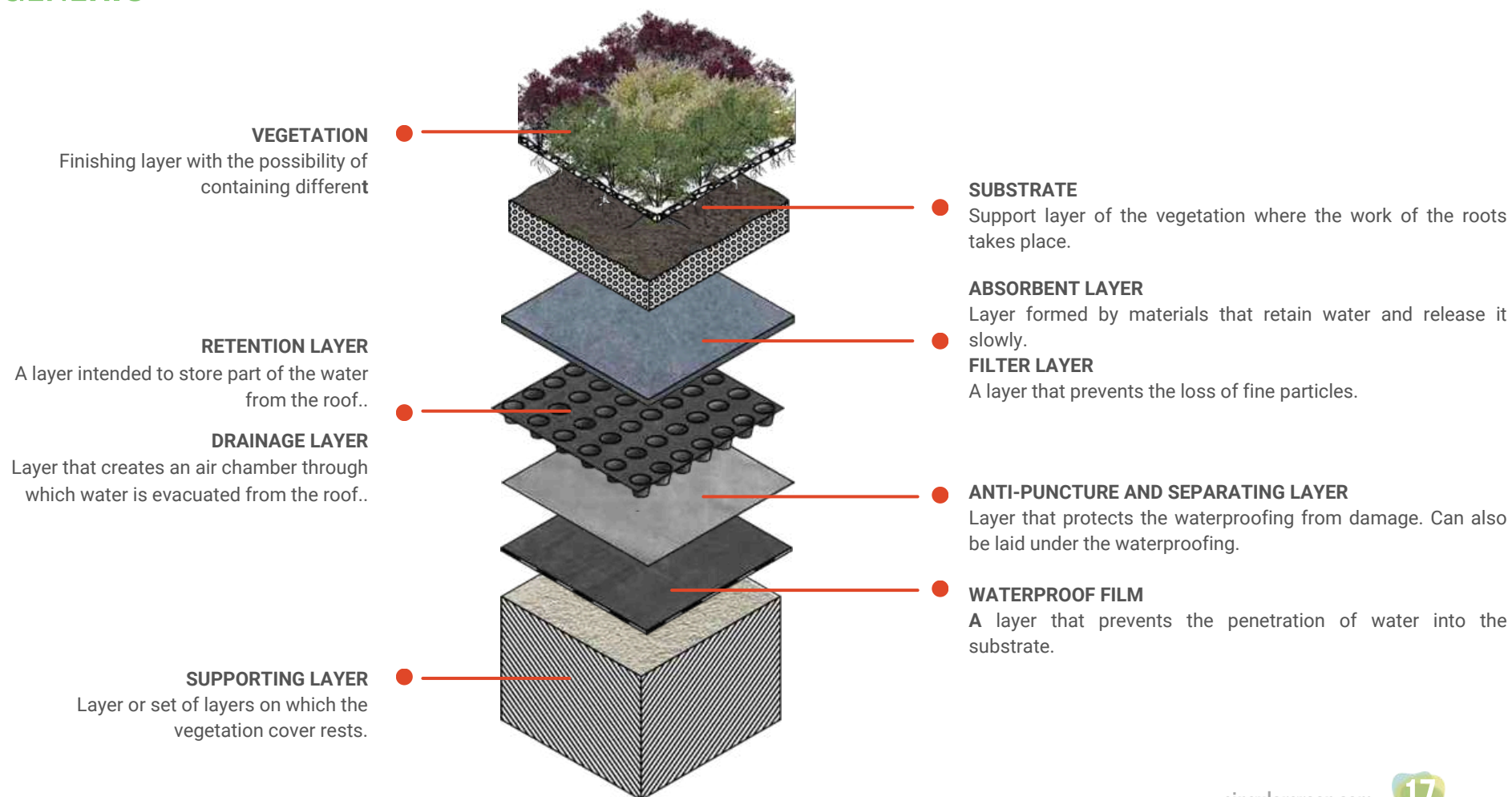
Better use of  
**URBAN SPACES**





# 04

## COMPOSITION GENERIC





**Increased personal well-being**





# 05

## OPTIMISING WATER CONSUMPTION

One of the most important factors when designing a landscaping project is water management. For this reason, at SingularGreen we look for the most appropriate system on each occasion to reduce the demand for irrigation in our projects.

We also have the latest technology in remote control systems to manage maintenance needs quickly and efficiently. Therefore, we monitor all our projects to fulfil our commitment to keep them perfect at all times.





# 06

## MAINTENANCE GUARANTEE

The key to the success of projects that integrate nature and architecture lies in maintenance.

That is why, at SingularGreen, we provide free support throughout the life of the project. Through our remote control system, we carry out constant monitoring to detect all maintenance needs and ensure that it is always perfect, whether we are responsible for maintenance or an external company is commissioned.

In addition, in projects where we carry out the maintenance ourselves, we offer a 100% plant guarantee.



Gandía, Valencia 2020



Vilamarxant, Valencia, 2011





# 07

## WHO ARE WE?

At SingularGreen, we specialize in providing cities with green spaces through **Nature-Based Solutions** and the **integration of architecture and vegetation**, with the aim of improving the quality of life for those who inhabit them.

That's why we don't just design, we take action by creating all kinds of **unique landscaping projects**.

Innovation is in our DNA, and our R&D department has been conducting constant research for over **15 years to develop our own technology**, adapting to each environment.

At SingularGreen, we are passionate about what we do, and we are characterized by **creating creative solutions for your project**, offering comprehensive advice, execution, and maintenance services, always adapting to your needs.

**SingularGreen: Creative Solutions Based on Nature.**





[singulargreen.com](http://singulargreen.com)

[info@singulargreen.com](mailto:info@singulargreen.com)

+34 966 282 640

+34 673 768 624

