



**LIVING WALL  
LEAFSKIN**



Canal de Isabel II, Madrid, 2020

# 01

## LIVING WALL LEAFSKIN

The LeafSkin® system improves the performance of traditional vertical gardening systems. A lightweight seeded garden, with 40% less weight than the rest of hydroponic vertical gardens, only 30 kg/m<sup>2</sup>.

It stands out for its easy installation, its minimum thickness and its adaptation to walls with any geometry.

It is the most economical system and is especially suitable for large surfaces.



**Ultralight**  
system

**Thickness**  
minimum

Adaptation to any  
**type of wall**

Easy  
**installation**



Azuqueca de Henares

# 02

## DESCRIPTION OF THE SYSTEM

### TYPE OF SYSTEM:

Hydroponic, with sprayed substrate.

### LOCATION:

Outdoor and indoor. Ideal for large areas.

### MANUFACTURING:

Standard size panels adaptable to different shapes and sizes.

### INSTALLATION:

Delivered pre-assembled and seeded, ready to be anchored to the support and connected to the irrigation pipes. All that is required is a water supply and drainage connection.

### TYPE OF IRRIGATION:

Recirculation of water or discharge to the drainage network.

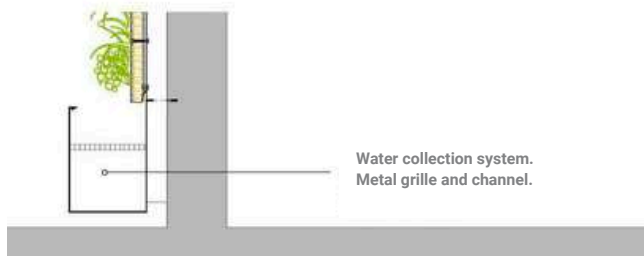
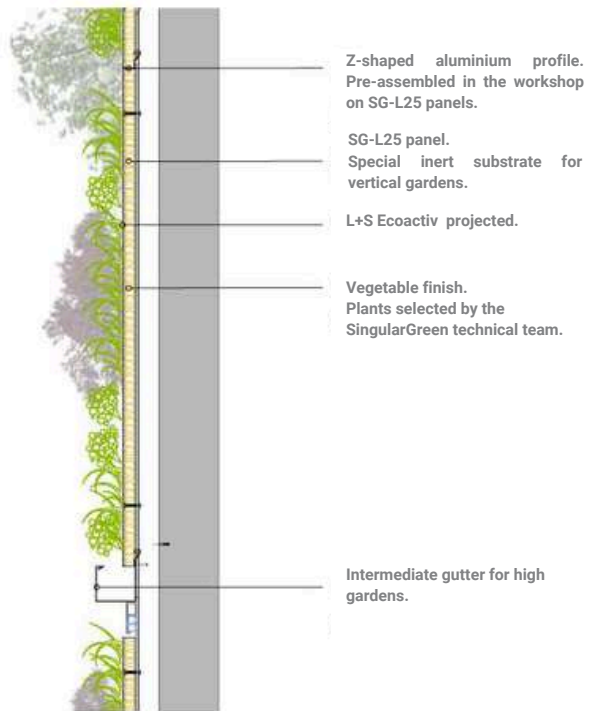
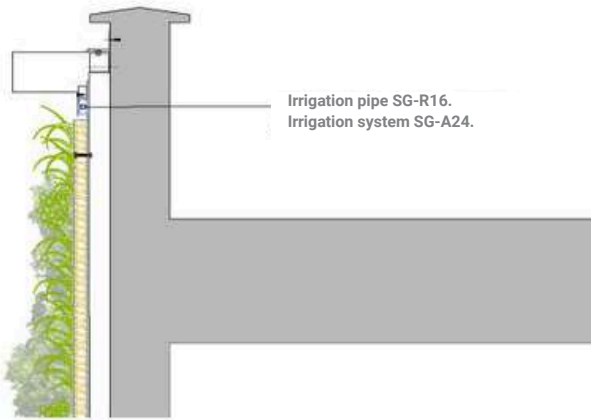
The main advantage of this system is its lightness, not exceeding 30 kg/m<sup>2</sup>, and its versatility, as the panels adapt to all shapes and sizes.



Juan Bravo, Madrid.

# 03

## COMPOSITION TYPE OF SYSTEM



The LeafSkin® system consists of multi-layer panels that are attached to an aluminium substructure, through which the irrigation system is installed and the garden is anchored to the supporting wall. The vegetation layer arises from the substrate sprayed with a seed mixture.





## BEARING AND RETAINING LAYER

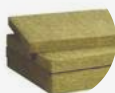
### DIRECT ANCHORING:

Metal screw with dowel, according to project.



### SG-P35 PANEL:

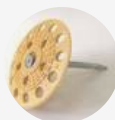
35 mm thick cellular PVC panel, anchored by screws to the garden wall, with joints and holes sealed with polyurethane mastic.



## PLANT SUPPORT

### SG-L25 PANEL:

Synthetic substrate panel specifically for vertical hydroponic gardening, 25 mm thick.



## PLANT SUPPORT FASTENING

Plastic washer Ø60 mm. and metal screw for fixing self-supporting rigid insulating materials.



## VEGETABLE FINISH

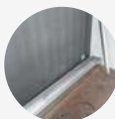
The vegetation is finished by projection of L+S Ecoactiv including seeds of the selected plant species.



## IRRIGATION PIPE

### SG-R16 PIPE:

16 mm diameter pipe with self-compensating and anti-drainage drippers with fixed flow rate, separated according to project requirements.



## WATER COLLECTION SYSTEM

Metal channel with water outlet, recirculation or drainage.

## Spain's largest vertical garden



Vertical garden Vitoria Congress Centre, 2014



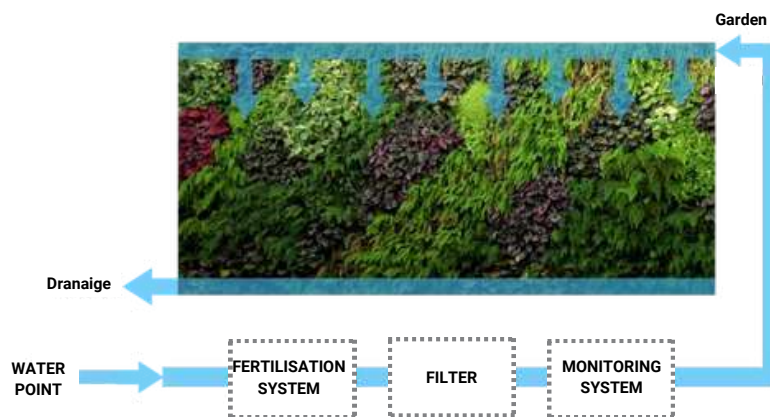
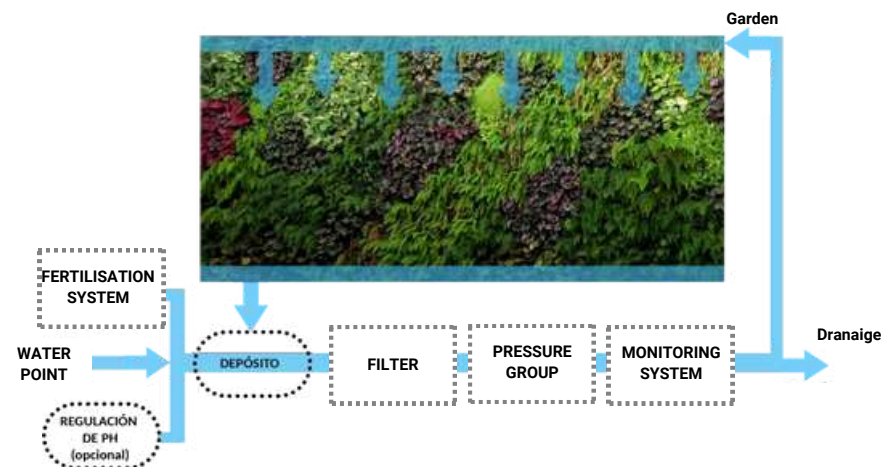


# 04

## IRRIGATION SYSTEM

### WATER RECIRCULATION: SG-A24R IRRIGATION SYSTEM

The SG-A24R irrigation system allows for maximum water savings since consumption is reduced to almost only evapotranspiration and water consumed by the plants. In a Mediterranean climate, water consumption during winter is approximately 1 liter per square meter per day, while water consumption during summer is around 5 liters per square meter per day.



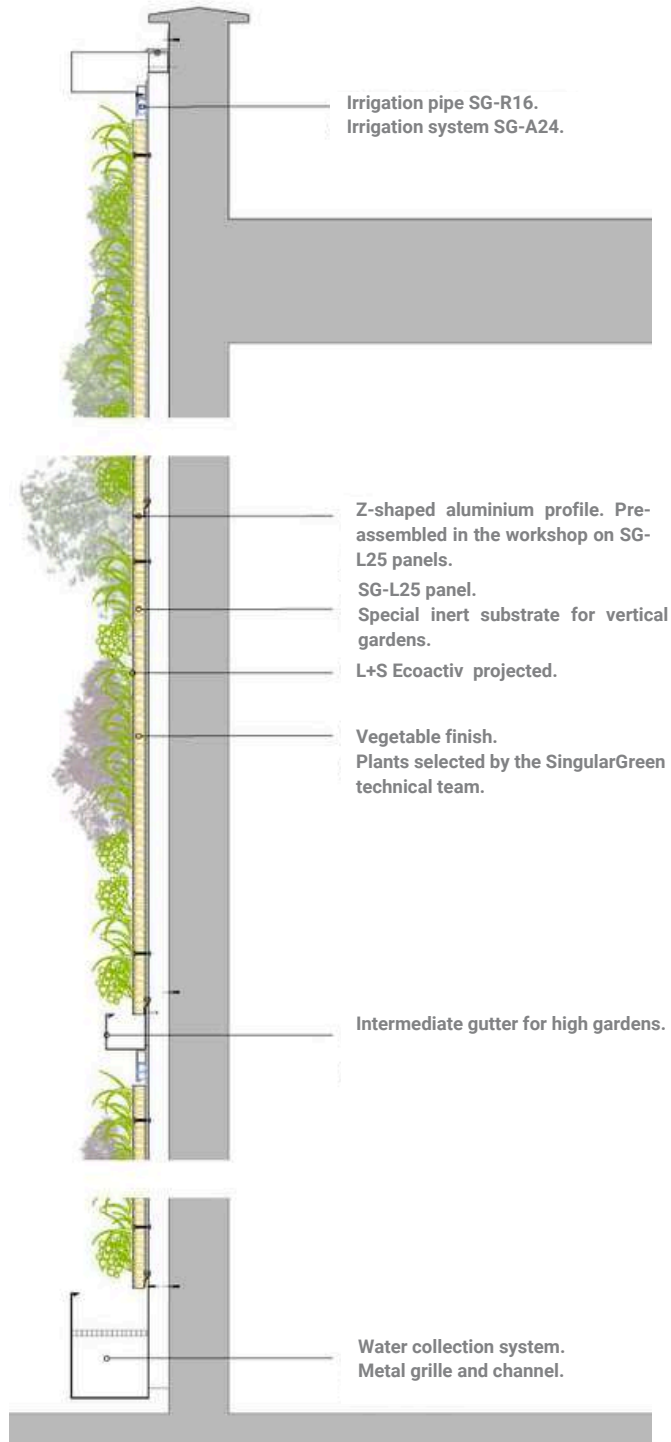
### CONTINUOUS WATER DRAINAGE: SG-A24P IRRIGATION SYSTEM

The SG-A24P irrigation system minimizes the space required for the irrigation system. Therefore, it is recommended for projects where the available installation space is very limited.



05

## DETAIL GENERIC CONSTRUCTION



DETAIL  
GENERIC CONSTRUCTION  
DWG



DETAIL  
GENERIC CONSTRUCTION  
PDF





## Ultra-lightweight system





# 06

## COMMITMENT MAINTENANCE

### FREE GARDEN MONITORING

Installation of SG-A24 irrigation system with remote control and alarms

### 100% FREE ADVICE

Whether we carry out the maintenance service ourselves or another company.

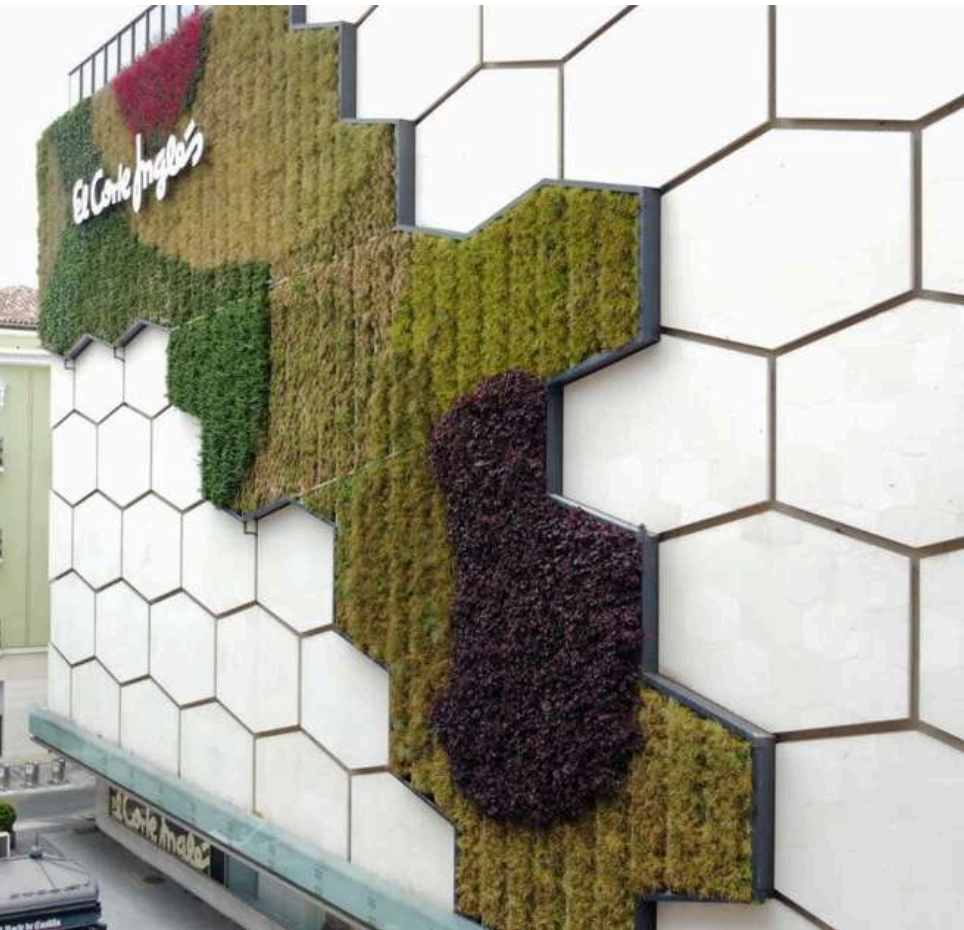
### MAINTENANCE SERVICE

Carrying out all the necessary maintenance work: start-up and monthly maintenance of the irrigation system, pest control, pruning, remote control of the irrigation system, etc.

### PLANT GUARANTEE

100% plant guarantee in our maintenance services.





Jardín vertical El Corte Inglés, Valladolid, 2020

#### APPLICABLE REGULATIONS

- CTE. DB HS Health and Safety.
- CTE. DB SI Fire Safety.
- CTE. DB-HE Energy Efficiency.
- NTJ 11V Vertical Landscaping.

\*This regulation is mandatory in Spain. If the work is to be carried out in another country, please consult the specific regulations of that country.

#### SPECIFICATIONS





# 08

## WHO ARE WE?

At SingularGreen, we specialize in providing cities with green spaces through **Nature-Based Solutions** and the **integration of architecture and vegetation**, with the aim of improving the quality of life for those who inhabit them.

That's why we don't just design, we take action by creating all kinds of **unique landscaping projects**.

Innovation is in our DNA, and our R&D department has been conducting constant research for over **15 years to develop our own technology**, adapting to each environment.

At SingularGreen, we are passionate about what we do, and we are characterized by **creating creative solutions for your project**, offering comprehensive advice, execution, and maintenance services, always adapting to your needs.

**SingularGreen: Creative Solutions Based on Nature.**



Canal de Isabel II, Madrid, 2020



[singulargreen.com](http://singulargreen.com)

[info@singulargreen.com](mailto:info@singulargreen.com)

+34 966 282 640

+34 673 768 624

